



## Technical Details

Company on Tour	3 x Puppeteers 1 x Technical Stage Manager
Vehicles on tour	1 x Short Wheel Base Van (for UK touring) <i>Parking will be required for the van. Please notify in advance if there are no parking facilities at the venue.</i>
Arrival & Set-Up	Minimum two sessions (eight hours) set up time Venue technician required to assist with load-in and technical troubleshooting.
Running Time	40 minutes
Interval	No Interval
Dismantle and Load-out	60 Minutes
Suitability	Recommended age 5+ and their families
Capacity	Maximum 150
Space & Venue Requirements	Total Blackout Required D-S Black Masking (3m minimum height) ('A' on LX plan) 6m x 5m (W x D) stage dimensions Minimum 4m height clearance Raked seating end-on
Set Details	Modular performance table – two felted wooden playing surface pieces with metal frame and front and wing panels (felted wood) Props inc. various props and puppets
Sound Requirements	Pre-recorded soundtrack is played from a toured iMac running QLab 5 (provided by company) PA to be provided by venue/promoter On-stage monitor required if possible
Lighting Requirements	Pre-rig required if possible Generic Lighting plan attached below, if booked we can send a specific lighting plan for your venue at an additional cost. Equivalent substitutions on approval of the Technical Manager. Generally the venue should provide: <ul style="list-style-type: none"><li>• 1 x S4 Zoom 25/50 (specific for Rosco gobo rotator)</li><li>• 5 x RJ 613SX or S4 Zoom 15/30 (1 x gobo holder size B)</li><li>• 6 x RJ 614SX or S4 Zoom 25/50</li><li>• 2 x Fresnel 1kW (with barn doors)</li></ul>



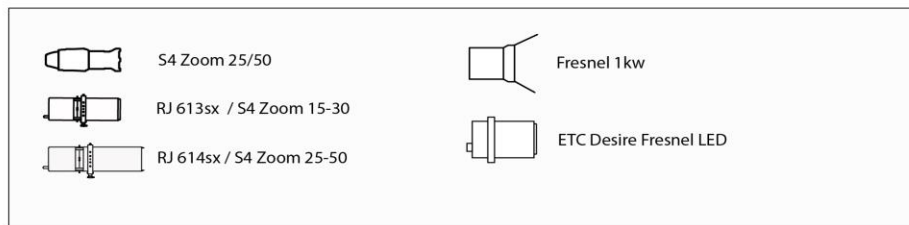
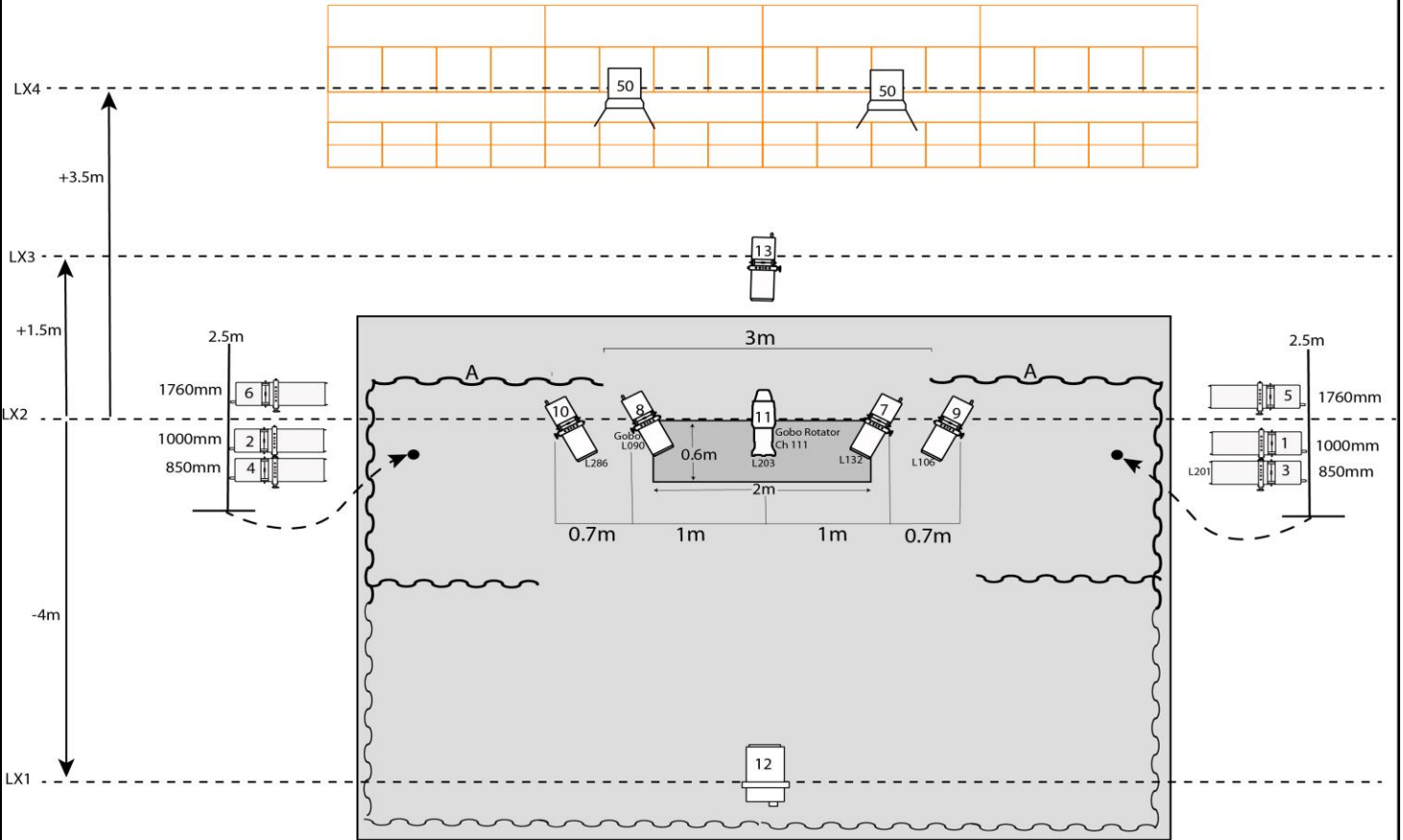
- 1 x ETC Desire LED Fresnel / Chauvet Ovation F-415FC
- 2 x 2.5m boom poles with bases.

All gels and gobos toured with company (venue to provide frames and holders)

Company can provide boom arms for RJ614s, boom and tank traps to be provided by venue

Operation	Lighting and sound will be operated by the TSM
Backstage Requirements	1 x Dressing room with full-length mirrors Access to laundry washing, drying and ironing facilities
Travel and accommodation	We will generally arrange all company travel and accommodation for UK touring, travel and accommodation for international touring should be arranged by the host venue/festival. For international touring the promoter is responsible for arranging: <ul style="list-style-type: none"><li>• All airport transfers to accommodation</li><li>• Single room accommodation, with private bathroom, within 20 minutes walking distance of the venue</li><li>• Where accommodation is not within walking distance of the venue, the promoter must make travel arrangements or provide an allowance to the company members for travel</li></ul>

## Hopeful Monsters Generic Touring LX



(Not to Scale)